

Outside

REPLACABLE BLADE KNIFE	HANDLE GLASS-FILLED NYLON	BLADES FINE EDGE AND SAW
------------------------	------------------------------	-----------------------------



6.985 cm

Folds
down
2nd

20.955 cm

WWW.TRUEUTILITY.COM

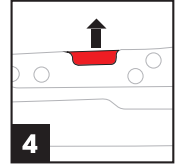
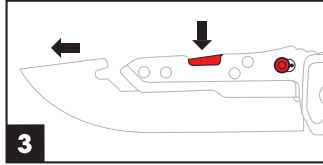
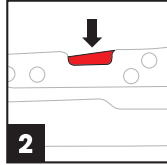
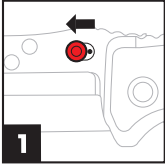
Alliance Consumer Group
5650 Alliance Gateway Freeway
Fort Worth, TX 76177

Folds
up 1st

13.97 cm

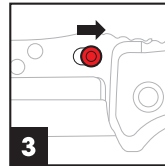
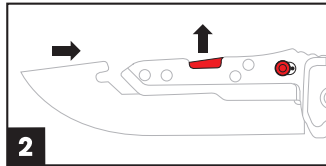
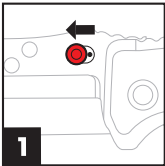
REMOVING A BLADE

1. Press the Toggle Lock forward
2. Press and hold down the Blade Release
3. Slide the blade out
4. Let go of the Blade Release



INSERTING A BLADE

1. Push the Toggle Lock forward
2. Slide blade in until the Blade Release clicks into place
3. Push the Toggle Lock backward to lock the blade in place
4. Gently pull on the blade to ensure it is secured



MAINTENANCE AND CARE

We recommend cleaning your Replaceable Blade Knife after every use. If needed, a small amount of oil can be used to lubricate the knife so it continues works as intended.

THANK YOU FOR YOUR PURCHASE