

NEBO®

PalTM+

Powerbank + Flashlight + Folding Knife



WARNING

AVOID EYE INJURY- Do not stare directly into beam or shine it directly into anyone's face. Doing so for more than a few seconds could cause retinal damage. Do not allow children to use LED lights unless under the supervision of an adult.

CAUTION

Do not mix old and new batteries. Do not mix alkaline, standard (carbon-zinc), or rechargeable (NiCad or NiMH) batteries. Do not use rechargeable or reusable alkaline batteries. Dispose of old batteries properly.



QUALITY GUARANTEE

This product is guaranteed against all defects in workmanship and materials for the original owner for one year from the date of purchase. Damage to or failure of the flashlight or any component thereof due to alteration, misuse, battery leakage or lack of maintenance will void any and all guarantees. Damage by leakage of batteries should be taken up with the manufacturer of the battery using their damage claim instructions. For any additional information call 1-800-255-6061.

All copyrighted and copyrightable materials, including, without limitation, the logo, design, text, graphics, pictures, copywriting and the selection and arrangement ("Materials") thereof are ALL RIGHTS RESERVED
Copyright © 2019 Alliance Sports Group L.P.

user manual
item #6715

CHARGING INSTRUCTIONS

- Open the charging compartment to access charging ports
- Use the Micro USB port to charge PaL+
- Use the USB port to charge your USB powered device



- Charging indicator will blink **RED** while charging and turn steady **RED** when fully charged
- Charging indicator will turn **BLUE** when used as a power bank



LIGHTING INSTRUCTIONS

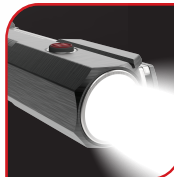
- Press button 1x to activate
- Press button again to turn OFF
- Double-tap the button to activate STROBE mode

DIMMING INSTRUCTIONS

- While ON, press and hold button to activate dimming function.
- Light will flash quickly when it reaches 10% or 100% to indicate it has reached the lowest or highest light output
 - Release button at any time to achieve desired brightness
 - Light will continue to dim/brighten between 100% and 10% until button is released.

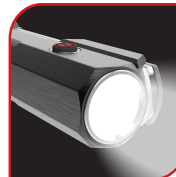
MEMORY POWER RECALL

If the light has been dimmed and powered OFF, the next activation will recall the last used power setting. To reprogram, simply follow the dimming instructions to achieve desired brightness.



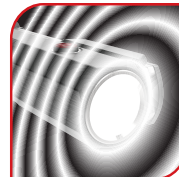
HIGH - 400 LUMENS

- 2.3 Hours
- 167 Meters



LOW - 40 LUMENS

- 13 Hours
- 57 Meters



STROBE - 400 LUMENS

- 2.5 Hours
- 167 Meters

NOTE: Before using the PaL+, it is best to fully charge the unit.

Powerbank + Flashlight + Folding Knife

POWERBANK

The PaL+ is fully rechargeable and also serves as a powerbank to charge your USB powered device.



REMOVABLE BLADE

- To remove blade, use a coin to unscrew the blade screw by turning counter-clockwise
- Remove blade and reattach screw by turning clockwise
- To reattach, simply reverse steps



POWERBANK FEATURE TO RECHARGE YOUR PHONE

Charges your mobile device...anytime, anywhere
ADDS HOURS OF POWER