

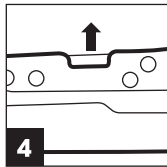
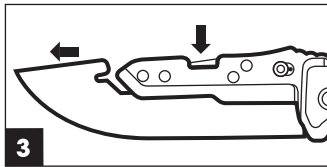
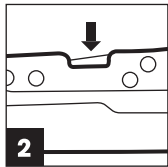
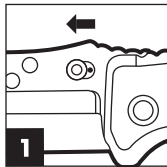
 **TRUE**[®]

SWIFT EDGE[®]
REPLACEABLE BLADE KNIFE

3.5" Fast Flip
with G10 Handle

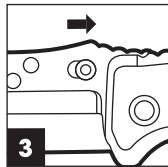
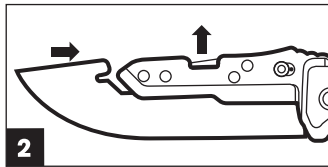
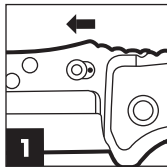
REMOVING A BLADE

1. Pull the Toggle Lock forward
2. Press and hold down the Blade Release
3. Slide the blade out
4. Let go of the Blade Release



INSERTING A BLADE

1. Pull the Toggle Lock forward
2. Slide blade in until the Blade Release clicks into place
3. Pull the Toggle Lock backward to lock the blade in place
4. Gently pull on the blade to ensure it is secured



MAINTENANCE AND CARE

We recommend cleaning your Replaceable Blade Knife after every use. If needed, a small amount of oil can be used to lubricate the knife so it continues to work as intended.

WWW.TRUEUTILITY.US

1 YEAR PRODUCT GUARANTEE

If you experience a problem, please do not return to your local store. Contact our Customer Service team at 800-255-6061 or www.nebotools.com/contact.

Alliance Consumer Group
700 Henrietta Creek Road
Roanoke, TX 76262