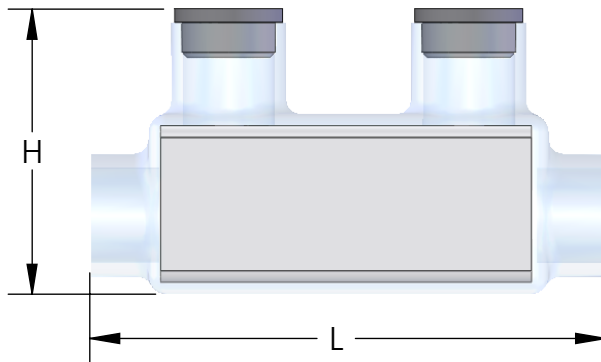


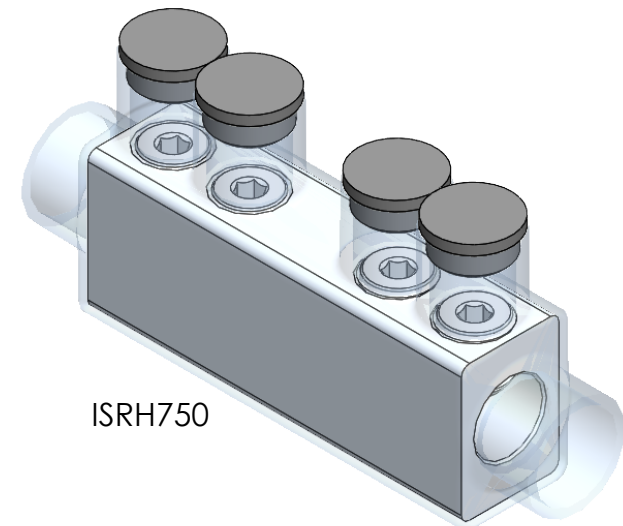
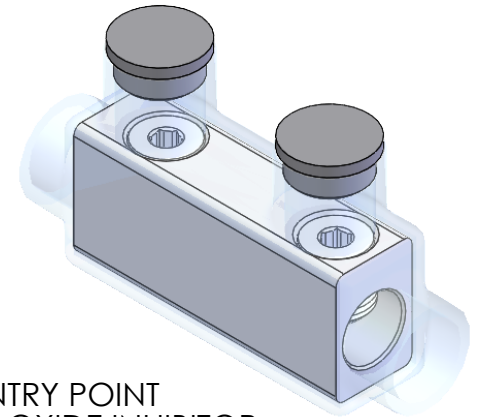


REMOVABLE CAP
TO TIGHTEN SCREW
(REPLACE WHEN COMPLETE)

INTERNAL HEX
PRESSURE SCREW



WIRE ENTRY POINT
PRE-FILLED W/ OXIDE INHIBITOR



ISRH750

PART #	WIRE RANGE	HEX SIZE	L	H	W
ISR-1/0C	1/0 - 14 AWG	3/16	3.25	1.48	.90
ISR-250C	250 MCM - 6 AWG	5/16	4.00	1.90	1.19
ISR-350C	350 MCM - 10 AWG	5/16	4.47	2.20	1.32
ISR-500C	500 MCM - 4 AWG	5/16	4.62	3.00	1.62
ISR-600C	600 MCM - 6 AWG	5/16	5.83	3.30	1.75
ISRH-750C	750 MCM - 1/0 AWG	5/16	7.25	3.50	1.75

NOTES:

1. CONNECTOR MANUFACTURED FROM 6061-T6 ALUMINUM ALLOY.
2. UL LISTED PER UL486A/B SPECIFICATIONS FOR 600V.
3. DUAL RATED FOR 90°C COPPER AND/OR ALUMINUM CONDUCTOR.
4. COLD TEMPERATURE RATED TO -45°C.
5. HIGH DIELECTRIC STRENGTH INSULATION IS ABRASION AND CHEMICAL RESISTANT.

CONTACT NSi FOR SALES @ 800.321.5847



POLARIS
SALES . CO . INC

PROPRIETARY AND CONFIDENTIAL

11625 PROSPEROUS DRIVE ODESSA, FL 33556

THE INFORMATION CONTAINED IN THIS
DRAWING IS THE SOLE PROPERTY OF
POLARIS SALES CO. INC. ANY
REPRODUCTION IN PART OR AS A WHOLE
WITHOUT THE WRITTEN PERMISSION OF
POLARIS SALES CO. INC. IS PROHIBITED.

TITLE:

INSULATED SPLICE
CONNECTOR SERIES

NAME
DRAWN BY T. MITCHELL

REVISED
4/17/2024

DWG. NO.

ISRC SERIES

MATERIAL: N/A

SCALE: N/A

SHEET: 1 OF 1